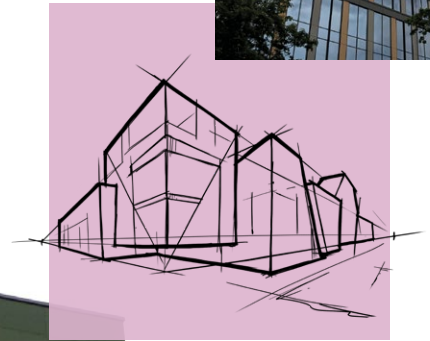


Product Data Sheet Rockpanel Premium



Rockpanel Premium

Key
product
data

Product description

All eyes on your facade! Rockpanel Premium is the very best we have to offer, customised to your needs. Our Rockpanel Premium A2 boards do not only enable concealed fixing, but the panels also offer optimum fire safety (Euroclass A2-s1,d0) and make it possible to have a span of up to 750 mm. All Rockpanel Premium A2 boards come with a ProtectPlus finish, which makes your facade extremely easy to clean; even graffiti can be washed off.

Assortment

Product Line	Board composition	Thickness	Standard dimensions
Rockpanel Premium	A2	11 mm	1200/1250 x 2500-3050 mm

Surface

The surface of Rockpanel Premium is treated with a four-layer water-borne polymer emulsion paint on one side, in a specific range of colours. The Rockpanel Premium boards are automatically provided with the Protect Plus layer. This fifth layer on top of the coloured paint makes the board extremely easy to clean; even graffiti can be washed off.

Fire Safety

The Euroclass classification of all Rockpanel products is based on testing with non-combustible mineral wool insulation. For the field of application covered by the classification please see the relevant Declaration of Performance. For high-rise buildings and high-risk buildings Rockpanel recommends the application of non-combustible (Euroclass A1-A2) cladding and insulation.

Key product properties

	A2 Premium	Unit	Test/classification method
Optical properties			
Colour stability ProtectPlus (5000 h)	4 or better	Class on greyscale	ISO 105 A02
Fire			
Fire classification	A2-s1,d0	Euroclass	EN 13501-1
Physical properties			
Thickness	11	mm	EN 325
Weight	13,75	kg/m ²	
Density, nominal	1250	kg/m ³	EN 323
Thermal conductivity	0,55	W/m·K	EN 10456
Water vapour permeability S _d (at 23 °C and 85 % RH) ProtectPlus	N/A	m	EN 12572
Coefficient of thermal expansion	9.7	x10 ⁻³ mm/m·K	EN 438-2 clause 17
Coefficient of moisture expansion (after 4 days)	0.206	mm/m	EN 438-2 clause 17
Mechanical properties			
Bending strength f ₀₅ (length and width)	≥ 25.5	N/mm ²	EN 310 / EN 1058
Modulus of elasticity	≥ 4740	N/mm ²	EN 310

Fixing distances

Maximum fixing distance (mm)	A2 ProtectPlus, 11 mm	
	b max.	a max.
Nail	N/A	N/A
Screw	N/A	N/A
Rivet	750	750
Consealed (anchors)	750	600
Bonding	N/A	N/A

Tests in this document are executed according the European Assessment Document (EAD 090001-01-0404) for Rockpanel boards.

Rockpanel boards

General
product
information

The Rockpanel boards are produced from compressed natural basalt, a sustainable and readily available volcanic rock and bonded with an organic binder from which all Rockpanel products derive their unique properties. The products combine the advantages of stone and workability of wood.

Fire safety

Rockpanel boards offer high performance when assessed for reaction to fire. Due to the nature of the stone wool fibres and the low binder content the boards have a low calorific value, which means that they will hardly contribute to a fire when exposed. As a result, the addition of environmentally unfriendly flame retardants is not needed.

The Rockpanel products are tested in accordance with the European harmonized technical specification (EAD 090001-01-0404) and are classified in accordance with EN 13501-1. The reaction to fire classification is based upon the end use situation as described in the EAD with non-combustible mineral wool insulation. The field of application covered by the reaction to fire classification is given in the Declaration of Performance (DoP, see www.rockpanel.com).

For high-rise buildings and high-risk buildings Rockpanel recommends only the application of non-combustible (Euroclass A1-A2) cladding and insulation.

Sustainability and environment

Rockpanel Durable and A2 products have been independently certified for their environmental performance by the Building Research Establishment (BRE), complying with all requirements identified in the scheme document SD028.

BRE granted Rockpanel an Environmental Product Declaration (Environmental Profiles Certificate No. 427) acknowledging Rockpanel Durable and A2 board material as amongst the best in their category with A+ and A ratings for various structures.

Rockpanel Durabel and A2 products have an Environmental Product Declaration (EPD) according to the EN15804 issued by Institut Bauen und Umwelt e.V. (IBU).

The influence on air quality and release of dangerous substances to soil and water has been determined to achieve the European Technical Assessment. The analysis showed Rockpanel boards contain no dangerous materials such as biocides; the manufacture of Rockpanel boards does not involve the use of flame retardants or cadmium. The formaldehyde concentration is $\leq 0.0105 \text{ mg/m}^3$ which relates to formaldehyde class E1.

Warranty

With Rockpanel there is no need to compromise on the quality of the boards. For Premium Rockpanel offers a 15 year warranty. For details and additional warranties per product line please have a look at our warranty documents on www.rockpanel.co.uk.

Visual appearance

Surface quality: Rockpanel boards are produced with the utmost care and individually checked before being approved. In the event of doubts the panels are judged visually for aesthetic flaws, in daylight, without sight enhancements, from a distance of at least 5 metres in front of the surface of the facade element, with an observation angle of 45° (horizontally/vertically).

Batches: Rockpanel boards are produced using incoming inspection, process assurance and quality control by which Rockpanel boards in standard RAL/NCS colours out of different batches can be combined. However, for project related orders, the whole order for a given project must be ordered as a single batch.

Due to possible slight variations between batches of Rockpanel Premium Woods or Stones, the whole order for a given project needs to be ordered in one single batch.

Maintenance

Depending on the surface treatment, the boards can be cleaned with ordinary cleaning agents such as car shampoo dissolved in lukewarm water. Organic solvents for boards with the ProtectPlus finish are in general also allowed (such as white spirit and acetone), however consult Rockpanel for the correct application method. To remove graffiti, Rockpanel can supply a special cleaner.

Rockpanel recommends inspection and when needed cleaning once a year. For more information, contact Rockpanel.

Packaging

The panels are provided with a protective film on the decorative face (with the exception of Rockpanel Metallics White Aluminium/Grey Aluminium, Natural, Lines² and Structures) and are delivered on pallets and with a protective cover and edge protection.

The panels must be stored on a dry sub-soil and protected against rain, preferably under a cover. Pallets shall be stacked no more than two pallets high.

The panels should be lifted upwards when being handled and should not be slid over one another. Protective foam membranes should be placed between the sheets again to protect the surface layer, for example when the panels are stacked after having been sawn.

Rockpanel Premium

Detailed
product
information

Within our detailed product information section you can read about the impact resistance, suitable subframes, fire properties and the specified fixings. Also visit www.rockpanel.co.uk for additional information on Rockpanel board material, such as a complete overview of the Rockpanel assortment, guidelines for processing and installation, specifications text, health and safety and application.

Impact resistance

Impact resistance (categories)	Premium, rivets	Premium, concealed fixing	Test / classification method
Hard body (1 J)	IV	-	ISO 7892: 1988
Hard body (3 J)	III, II, I	I	
Hard body (10 J)	II, I	I	
Soft body (10 J)	IV, III	-	
Soft body (60 J)	-	I	
Soft body (300 J)	-	II	
Soft body (400 J)	-	I	

Application for full boards, for a complete overview and description, please consult the relevant European Technical Assessment.

Suitable subframes

Rockpanel Premium A2 boards can only be attached to a sub-frame of aluminium or steel. The minimum thickness of the vertical aluminium profiles is 1.5 mm.

The aluminium is AW-6060, AW-6063, AW-6005A or equivalent according to EN 755-2.

The Rm/Rp0.2 value is 170 /140 for profile T6 and 195/150 for profile T66. The minimum thickness of the vertical steel profiles is either 1.0 mm (steel quality is S320GD +Z EN 10346 number 1.0250, or equivalent for cold forming), or 1.5 mm (steel quality EN 10025-2:2004 S235JR number 1.0038).

Properties in relation to fire

Product Grade	Vertical subframe***	Construction build-up	Fixing method	Classification
A2 11 mm	Aluminium or steel subframe	Ventilated with ≥ 20 mm cavity	Mechanically fixed (rivets, TU-S anchors)	A2-s1,d0

*** For a complete overview and description of the end use situation in which the classification is determined, please consult the relevant European Technical Assessment.

Fixings specified for use with Rockpanel Premium

	Rivet⁽¹⁾				Concealed	
A2 11 mm Premium	✓	✓	✓	✓	✓	✓
Code	AP14-50210-S	1290407	SSO-D15-50180 (a)	1290806 (b)	TU-S 6x13	TU-6x11
Subframe ⁽²⁾	Aluminium subframe	Aluminium subframe	Steel subframe	Steel subframe	Aluminium subframe	Aluminium subframe
Thickness subconstruction ⁽²⁾	≥ 1,5 mm	≥ 1,8 mm	≥ 1,0 mm	≥ 1,5 mm	≥ 1,5 mm	≥ 1,5 mm
Material (body)	EN AW-5019 (AlMg5) according EN 755-2	EN AW-5019 (AlMg5) according EN 755-2	Stainless steel nr. 1.4578 according EN 10088	Stainless steel nr. 1.4567 according EN 10088	Stainless steel (material nr. 1.4401 according EN 10088)	Stainless steel (material nr. 1.4401 according EN 10088)
Length	21 mm	21 mm	18 mm	16 mm	13 mm	11 mm
Shank diameter	5 mm	5 mm	5 mm	5 mm	6 mm	6 mm
Head diameter fixing	14 mm	14 mm	15 mm	14 mm	N/A	N/A
Thickness hook					5 mm	3 mm
Material hook					Equal to subframe	Equal to subframe
Hole Ø fixed point	5,2 mm	5,2 mm	5,2 mm	5,2 mm	-	-
Hole Ø moving point	8,0 mm	8,0 mm	8,0 mm	8,0 mm	-	-
Hole Ø slotted point	5,2 x 8,0 mm	5,2 x 8,0 mm	5,2 x 8,0 mm	5,2 x 8,0 mm	-	-

⁽¹⁾ For correct fixing, use riveting tool with rivet spacer

⁽²⁾ in accordance with paragraph „Suitable Subframes“

^(a) Application onto steel >2 mm the same rivet with higher clamping thickness should be applied (i.e. code SSO-D15-50220, length 22 mm)

^(b) Application onto steel >2 mm the same rivet with higher clamping thickness should be applied (i.e. code 1290807, length 20 mm)

European Technical Assessment (ETA)**Declaration of Performance (DoP)**

ETA- 18/0883	Rockpanel Premium A2	0764-CPR-0313	Rockpanel Premium A2
--------------	----------------------	---------------	----------------------

Additional information

The product data sheet Rockpanel Premium clearly specifies the general product properties and is not related to national building regulations. Relevant information about the application of Rockpanel boards related to national building regulations or national guidelines can be found in the Rockpanel instruction guide and on the Rockpanel website. The Rockpanel instruction guide and the website also provide fixing tables related to national annex of the EN 1991-1-4.

Published January 2020. This publication supersedes and replaces all previous datasheets. Subject to alterations. All data are intended to serve as general information about our products and their possible uses. This publication is an extract of the European Technical Assessment, which is the only legally binding document. ROCKWOOL B.V. / Rockpanel disclaims any liability towards possible (typing) errors and incomplete information in this product data sheet. No rights may be derived from the content of this publication.

www.rockpanel.co.uk