



PRODUCT RANGE

United Kingdom

MR018 / 0522



Joris Ide NV is not responsible for printing errors and / or any differences between the images in this catalogue and the final product delivered. Joris Ide NV reserves the right to modify the technical specifications at any time without prior notice. To ensure that you have the latest version at hand, we invite you to scan this QR code to retrieve the latest version on our website www.joriside.com.



Index

Roof Profiles	2
Wall Profiles	3
Roof Tiles	5
Liner Profiles	6
Jl Shield Built-up System	7
Trays	10
Roof decks	11
Galvanized profiles	14
Composite panels	15
Roof lights	18
Accessories	21

PRODUCT RANGE

United Kingdom

As a manufacturer of steel roof and wall cladding for new and renovated buildings in the industrial, commercial and agricultural sector, the DIY market, roof construction and private housing, Joris Ide is a household word in Europe. Thanks to our know-how we're able, for any project, to offer a tailored solution.



Jl 24-183-1100 Roof-tile



Jl 45-333-1000 Roof



Jl Wall 1000SF PIR in a residential application.

Symbols used in this brochure to show other available options;

Aluminium



Anti-drop



Perforated



Crimp curved



Smooth curved



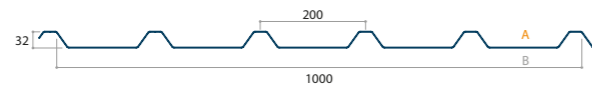
Please specify the colour side when ordering !

Roof Profiles

Please specify colour side when ordering !

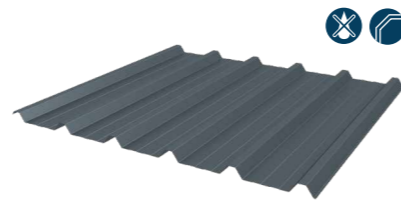
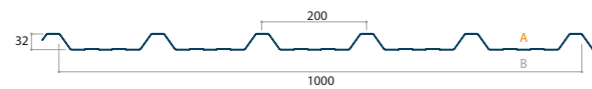
JIC 32-200-1000 (MW5R)

Thickness (mm)	Weight (kg/m ²)
0,50	4,83
0,70	6,76



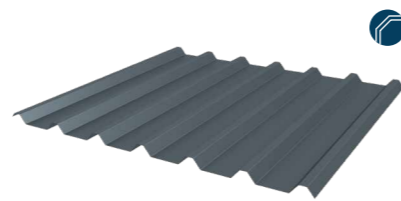
JIC 32-200-1000 (MW5RS)

Thickness (mm)	Weight (kg/m ²)
0,50	4,83
0,70	6,76



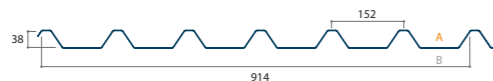
JIC 32-167-1000 (32-1000R1F)

Thickness (mm)	Weight (kg/m ²)
0,50	4,83
0,70	6,76



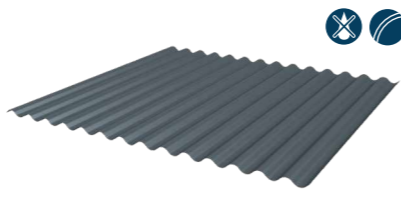
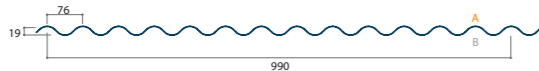
JIC 38-152-914 (38-914R)

Thickness (mm)	Weight (kg/m ²)
0,50	5,28
0,70	7,39



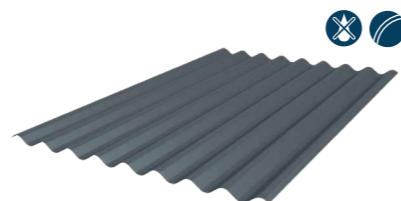
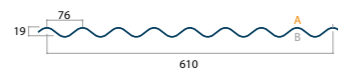
JIC 19-76-990 (13,5-3)

Thickness (mm)	Weight (kg/m ²)
0,50	4,74
0,70	6,63



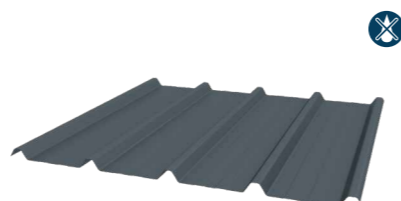
JIC 19-76-610 (8-3)

Thickness (mm)	Weight (kg/m ²)
0,50	4,73



JIC 33-250-1000 Roof

Thickness (mm)	Weight (kg/m ²)
0,50	4,79
0,60	5,75
0,70	6,70

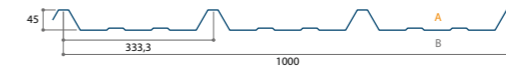


Roof Profiles

Please specify colour side when ordering !

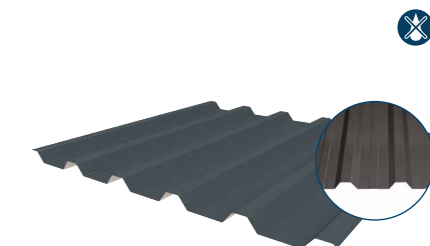
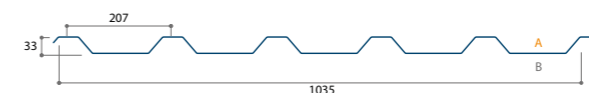
JIC 45-333-1000 Roof

Thickness (mm)	Weight (kg/m ²)
0,50	4,79
0,60	5,75
0,70	6,70



JIC 35-207-1035 Roof

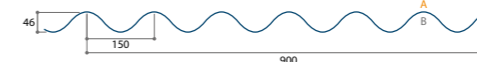
Thickness (mm)	Weight (kg/m ²)
0,50	4,63
0,60	5,55
0,70	6,48



Optional: with reinforcing rib

JIC 46-150-900 Roof

Thickness (mm)	Weight (kg/m ²)
0,70	7,45

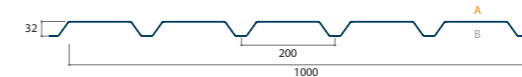


Wall Profiles

Please specify colour side when ordering !

JIC 32-200-1000 (MW5C)

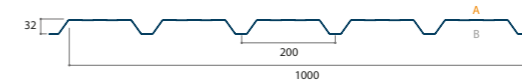
Thickness (mm)	Weight (kg/m ²)
0,50	4,83
0,70	6,76



Optional: Agrivent

JIC 32-200-1000 (MW5CS)

Thickness (mm)	Weight (kg/m ²)
0,50	4,83
0,70	6,76



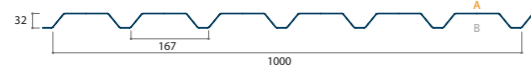
Optional: Agrivent

Wall Profiles

Please specify colour side when ordering !

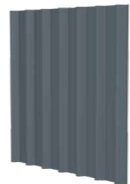
JIC 32-167-1000 (32-1000C)

Thickness (mm)	Weight (kg/m ²)
0,50	4,83
0,70	6,76



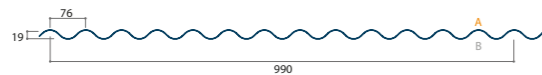
JIC 38-152-914 (38-914C)

Thickness (mm)	Weight (kg/m ²)
0,50	5,28
0,70	7,39



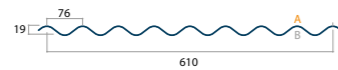
JIC 19-76-990 (13,5-3)

Thickness (mm)	Weight (kg/m ²)
0,50	4,74
0,70	6,63



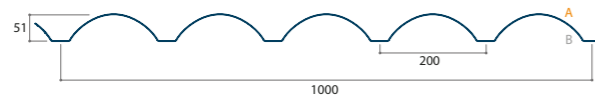
JIC 19-76-610 (8-3)

Thickness (mm)	Weight (kg/m ²)
0,50	4,73
0,70	6,62



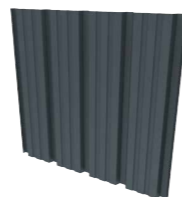
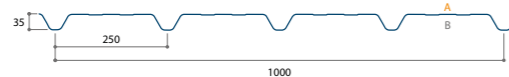
JIC 50-200-1000 (50-1000C)

Thickness (mm)	Weight (kg/m ²)
0,70	6,76



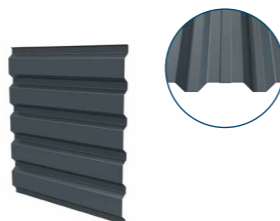
JIC 33-250-1000 Wall

Thickness (mm)	Weight (kg/m ²)
0,50	4,79
0,60	5,75
0,70	6,70



JIC 35-207-1035 Wall

Thickness (mm)	Weight (kg/m ²)
0,50	4,63
0,60	5,55
0,70	6,48



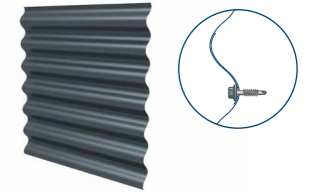
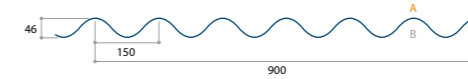
Optional: with reinforcing rib

Wall Profiles

Please specify colour side when ordering !

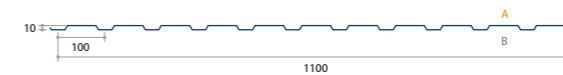
JIC 46-150-900 Wall

Thickness (mm)	Weight (kg/m ²)
0,70	7,45



JIC 10-100-1100

Thickness (mm)	Weight (kg/m ²)
0,60	5,22
0,75	6,53

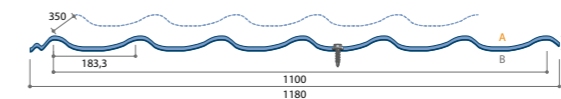


Roof Tiles

Please specify colour side when ordering !

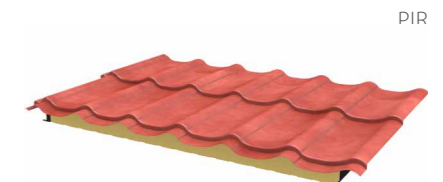
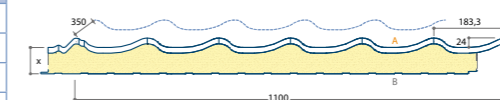
JIC 24-183-1100 Roof-tile

Thickness (mm)	Weight (kg/m ²)
0,50	4,46



JIC Permapan PIR

Thickness (mm)	Weight (kg/m ²)	U-Value (W/m ² K)
40	9,52	0,47
60	10,42	0,33
80	11,32	0,26
100	12,22	0,21
120	13,12	0,18

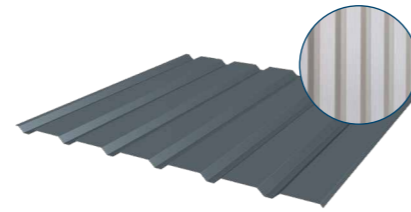
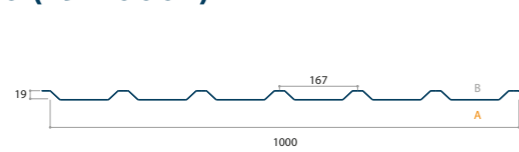


Liner Profiles

Please specify colour side when ordering!

JIC 19-167-1000 (19-1000L)

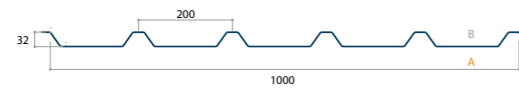
Thickness (mm)	Weight (kg/m ²)
0,40	3,86
0,70	6,76



Available as Standard, Reverse OR Standard with Swages
Optional: Agrilite

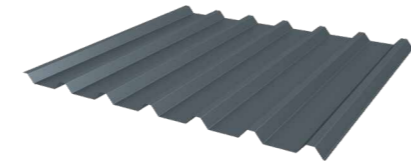
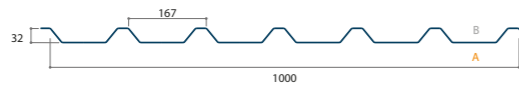
JIC 32-200-1000 (MW5L)

Thickness (mm)	Weight (kg/m ²)
0,70	6,76



JIC 32-167-1000 (32-1000L)

Thickness (mm)	Weight (kg/m ²)
0,70	6,76

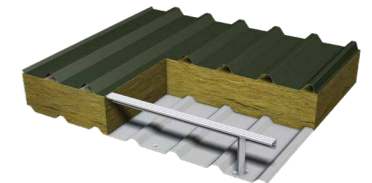
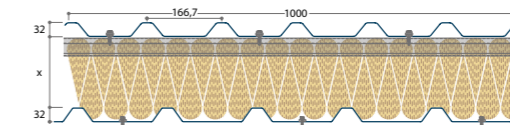


Ji Shield Built-up System

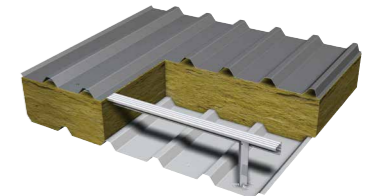
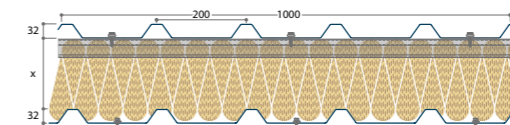


As one of the largest European manufacturers of roof and wall systems, Joris Ide supply leading built-up systems. Trapezoidal roof and walls systems (as well as sinusoidal walls systems) which are over-purlin constructions incorporating insulation, liner sheet, spacer and all other system components. The quality of materials and manufacture, combined with the high levels of performance capable by the systems, makes Ji Shield Systems the leading choice explains why the corporate strapline is 'The Steel Future'. For more information please consult our Ji Shield brochure.

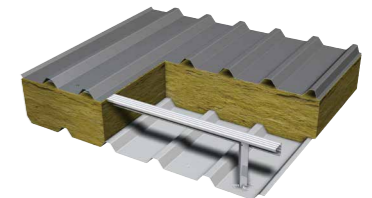
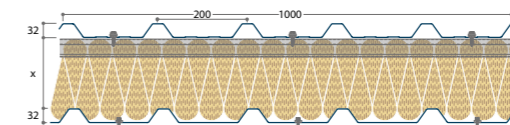
Ji Shield Built-up System Roof 1



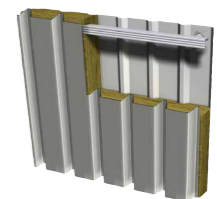
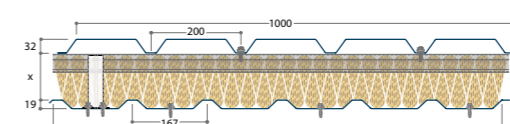
Ji Shield Built-up System Roof 2



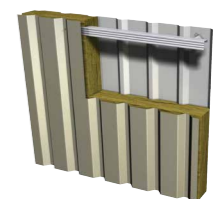
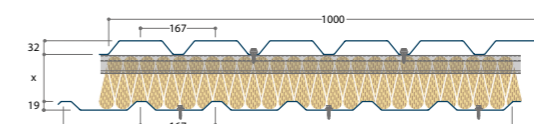
Ji Shield Built-up System Roof 3



Ji Shield Built-up System Wall Vertical 1



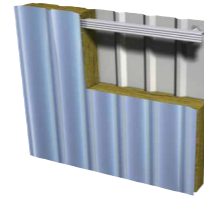
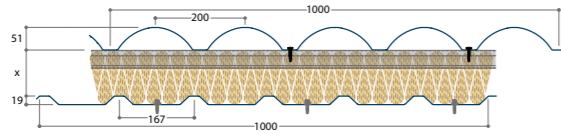
Ji Shield Built-up System Wall Vertical 2



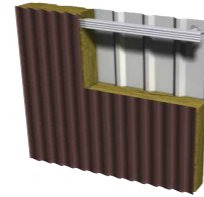
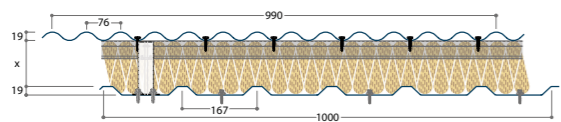
JI Shield Built-up System



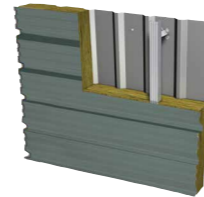
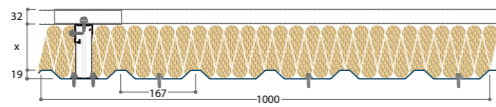
JI Shield Built-up System Wall Vertical 3



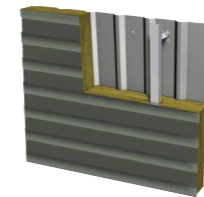
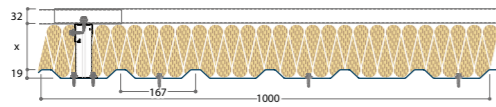
JI Shield Built-up System Wall Vertical 4



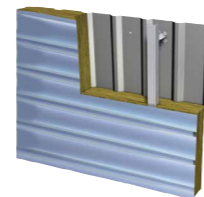
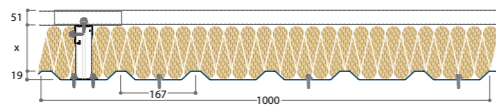
JI Shield Built-up System Wall Horizontal 1



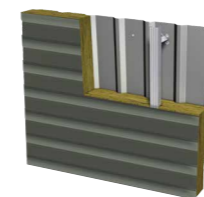
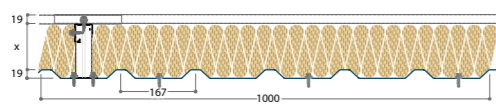
JI Shield Built-up System Wall Horizontal 2



JI Shield Built-up System Wall Horizontal 3



JI Shield Built-up System Wall Horizontal 4



Spacer bar system

Quattro

Fundamental to any built-up metal roofing or cladding system is the spacer used to separate the outer weathering skin from the internal liner sheet. This stops the low-density insulation from being over compressed and allows flexible constructions accommodating almost any insulation depth. The spacer system is crucial to the thermal efficiency and stability of the roof or wall system, supporting the outer sheet and transferring external loads to the structural elements.



The implementation of Building Regulations Part L2: 2010 'Conservation of Fuel and Power' has positioned the spacer as an even more critical factor to the thermal efficiency and stability of a metal roofing or cladding system. With the requirements to make buildings more thermally efficient, so the insulation depths increase to meet the desired U-values.

require reinforcement at any height. It has been extensively tested at CERAM during 2012, including the 400mm maximum bracket depth.

The tests established the systems load capacities to comply with the requirements of CE marking, prior to the 2013 mandatory implementation date in the UK.

As a result the 'traditional' spacer may struggle to accommodate increased depths of insulation and could become unstable when dynamic loads are applied to the roof, such as loading sheets out during installation.

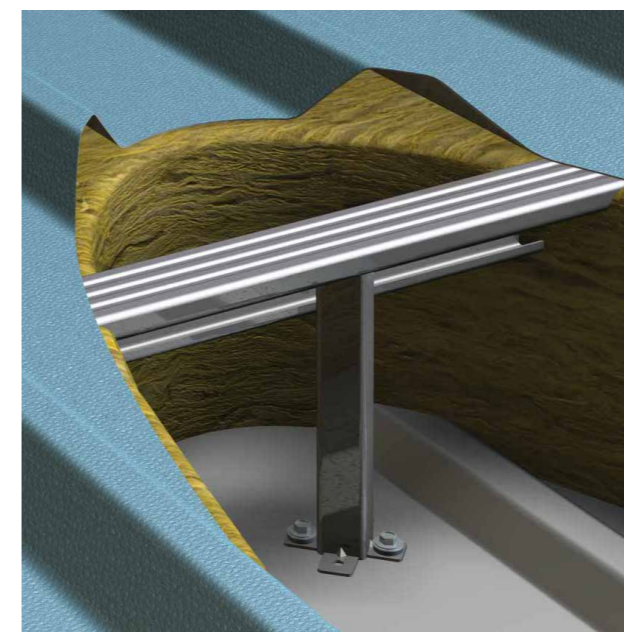
Quattro works with any metal envelope construction that requires a spacer system, such as vertical and horizontal wall cladding and built-up metal roofing systems.

Quattro shows remarkable strength and stability in axial and lateral loading capability and does not

Quattro forms an integral part of built-up systems and with this new product at the heart of any insulated metal roof or wall the construction can be confidently described as Quattro Secure.

Characteristics

Depth (mm)	100	120	140	150	160	170	180	200	220	240	260	280	300	320
U-value Roof	0,45	-	-	-	-	-	0,25	0,23	0,20	0,19	0,17	0,16	0,15	0,14
Wall	0,42	0,35	0,30	0,28	0,26	0,25	0,24	0,21	0,19	0,18	0,16	0,15	0,14	0,13



Potential U-values for a built-up system using trapezoidal outer and liner sheets and 0,040W/mK mineral wool quilt insulation.

U-values are likely to differ depending on the system used. Based on typical constructions. 1,5 m average purlin centres.

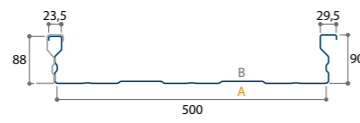
For exceptional constructions bracket heights from 340 mm to 400 mm are available in 20 mm increments.

Trays

Please specify colour side when ordering!

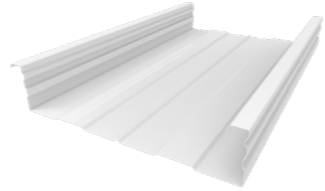
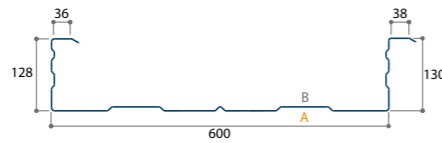
JI 90-500

Thickness (mm)	Weight (kg/m ²)
0,75	8,83
0,88	10,36
1,00	11,78



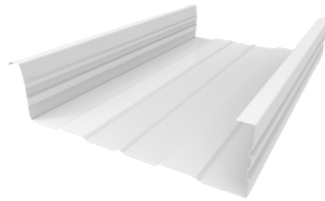
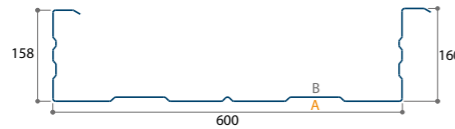
JID 130-600

Thickness (mm)	Weight (kg/m ²)
0,75	9,42
0,88	11,05
1,00	12,56
1,13	14,19
1,25	15,70
1,50	18,84



JID 160-600

Thickness (mm)	Weight (kg/m ²)
0,75	10,01
0,88	11,74
1,00	13,35
1,13	15,08
1,25	16,68
1,50	20,02

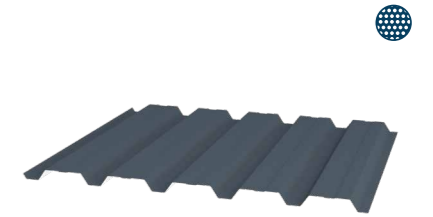
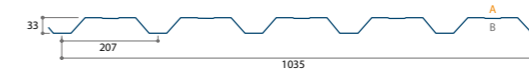


Roof decks

Please specify colour side when ordering!

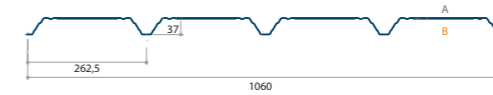
JI 35-207-1035R

Thickness (mm)	Weight (kg/m ²)
0,75	6,94
0,88	8,14



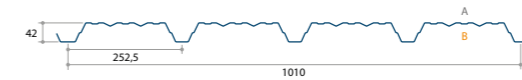
JI 37-265-1060

Thickness (mm)	Weight (kg/m ²)
0,75	6,89
0,88	8,08



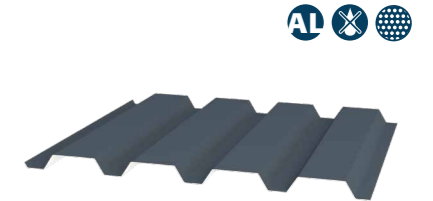
JI 42-252-1010

Thickness (mm)	Weight (kg/m ²)
0,75	7,11
0,88	8,34
1,00	9,48



JID 50-250-1000

Thickness (mm)	Weight (kg/m ²)
0,50	4,91
0,63	6,18
0,75	7,36
0,88	8,64
1,00	9,81
1,25	12,27



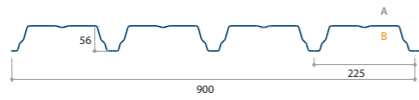
Roof decks

Please specify colour side when ordering!

JI 56-225-900



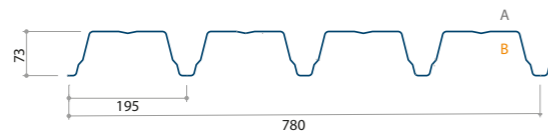
Thickness (mm)	Weight (kg/m ²)
0,75	7,98
0,88	9,36
1,00	10,64



JI 73-195-780



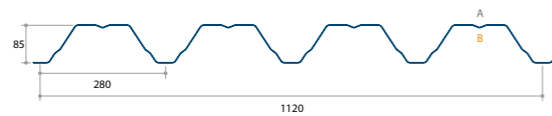
Thickness (mm)	Weight (kg/m ²)
0,75	9,21
0,88	10,80
1,00	12,28



JI 85-280-1120



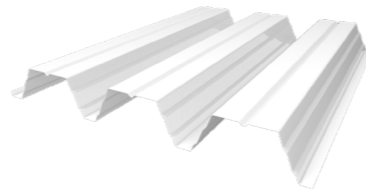
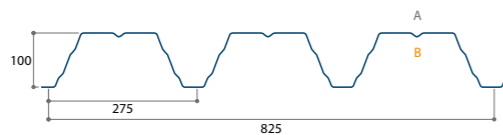
Thickness (mm)	Weight (kg/m ²)
0,75	7,89
0,88	9,25
1,00	10,51
1,25	13,14



JID 100-275-825



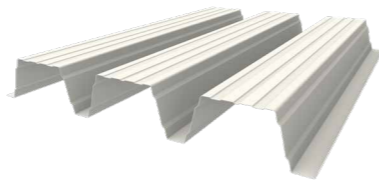
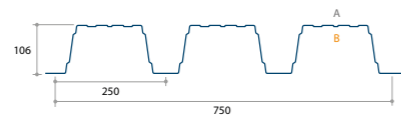
Thickness (mm)	Weight (kg/m ²)
0,75	8,92
0,88	10,47
1,00	11,89
1,13	13,44
1,25	14,87
1,50	17,84



JI 106-250-750



Thickness (mm)	Weight (kg/m ²)
0,75	9,73
0,88	11,42
1,00	12,98
1,25	16,22

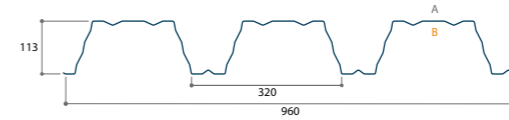


Roof decks

Please specify colour side when ordering!

JI 113-320-960

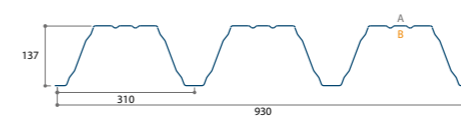
Thickness (mm)	Weight (kg/m ²)
0,75	9,20
0,88	10,79
1,00	12,27
1,25	15,33



JID 137-310-930



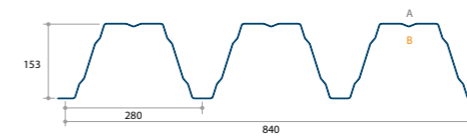
Thickness (mm)	Weight (kg/m ²)
0,75	9,50
0,88	11,14
1,00	12,66
1,25	15,83



JI(D) 153-280-840



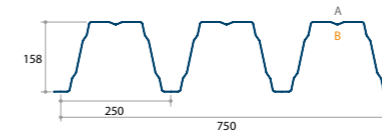
Thickness (mm)	Weight (kg/m ²)
0,75	10,51
0,88	12,34
1,00	14,02
1,25	17,52



JI(D) 158-250-750



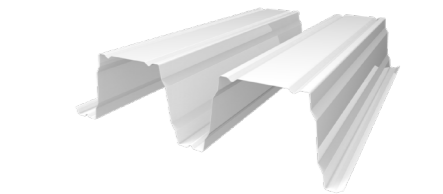
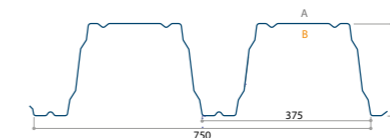
Thickness (mm)	Weight (kg/m ²)
0,75	11,78
0,88	13,82
1,00	15,70
1,25	19,63
1,50	23,55



JID 200-375-750



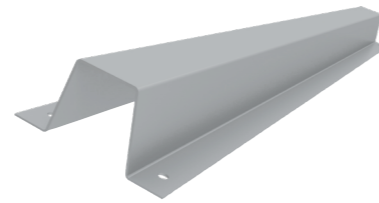
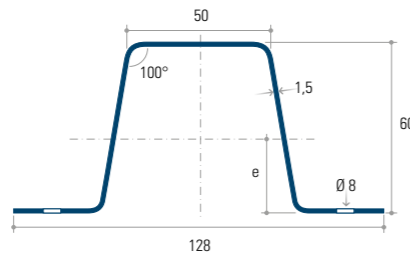
Thickness (mm)	Weight (kg/m ²)
0,75	11,78
0,88	13,82
1,00	15,70
1,25	19,63
1,50	23,55



Galvanized profiles

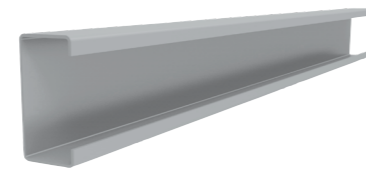
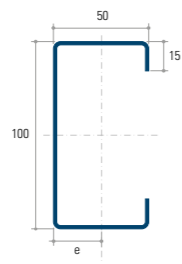
JI Omega profile

Thickness (mm)	Weight (kg/m ²)
1,50	2,54



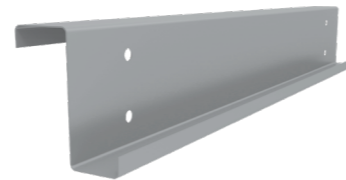
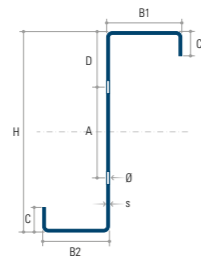
JI C-profile

Thickness (mm)	Weight (kg/m ²)
2,00	3,40
2,50	4,20



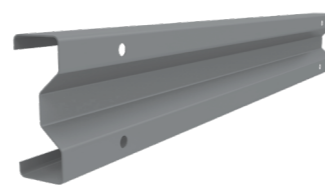
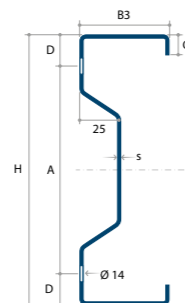
JI Z-profile

Thickness (mm)	Weight (kg/m ²)								
	Z140	Z160	Z180	z200	z220	z250	Z300	Z350	Z400
1,50	3,50	3,70	4,00	4,20	-	-	-	-	-
2,00	4,55	4,90	5,20	5,50	5,85	6,60	8,15	8,95	9,90
2,50	5,65	6,00	6,40	6,80	7,20	8,40	10,15	11,20	12,50
3,00	-	-	-	-	-	9,85	12,20	13,40	14,80
3,50	-	-	-	-	-	-	14,20	15,60	17,30



JI Sigma-profile

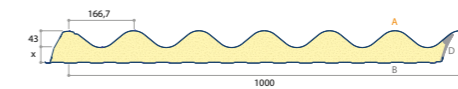
Thickness (mm)	Weight (kg/m ²)			
	Σ140	Σ170	Σ200	Σ230
1,50	3,50	3,85	4,20	4,50
2,00	4,55	5,10	5,50	6,00
2,50	5,65	6,35	6,80	7,55



Composite panels

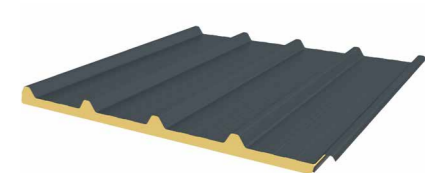
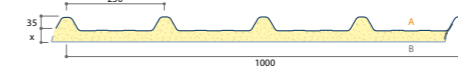
JI Onduroof PIR

Thickness (mm)	Weight (kg/m ²)	U-Value (W/m ² K)
40	11,11	0,39
60	11,86	0,29
80	12,62	0,23
120	14,13	0,16



JI Eco PIR 30-40

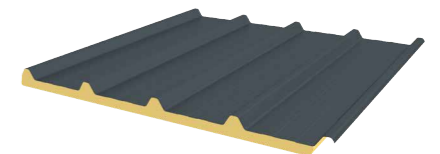
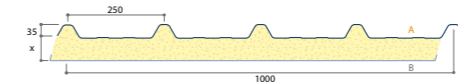
Thickness (mm)	Weight (kg/m ²)	U-Value (W/m ² K)
30	7,20	0,65
40	7,58	0,50



Liner: aluminium stucco foil

JI Eco PIR 60-100

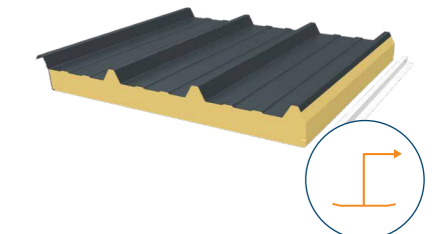
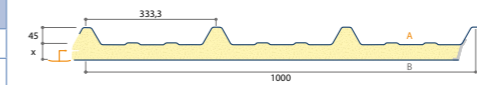
Thickness (mm)	Weight (kg/m ²)	U-Value (W/m ² K)
60	8,34	0,34
100	9,86	0,21



Liner: aluminium stucco foil

JI Roof Plus

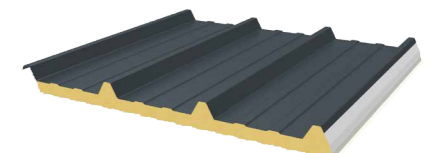
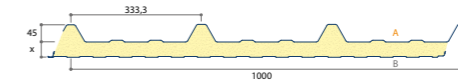
Thickness (mm)	Weight (kg/m ²)	U-Value (W/m ² K)
40	8,26	0,50
60	9,02	0,34
80	9,78	0,26



Liner: GRP white

JI Roof PIR

Thickness (mm)	Weight (kg/m ²)	U-Value (W/m ² K)
30	10,38	0,68
40	10,76	0,52
60	11,52	0,36
80	12,28	0,25
100	13,04	0,20
120	13,78	0,17
150	14,94	0,14

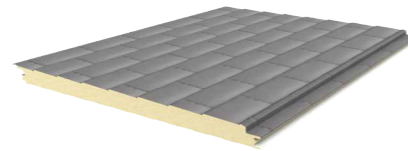
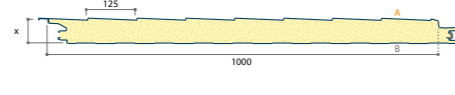


Remark: 30 mm is not LPCB-approved

Composite panels

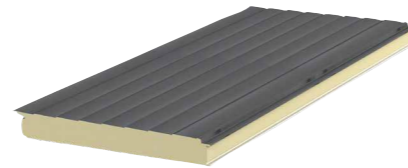
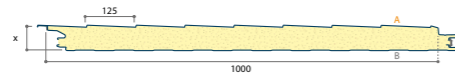
JI Slate 1000SF PIR Roof

Thickness (mm)	Weight (kg/m ²)	U-Value (W/m ² K)
60	10,44	0,39
120	12,72	0,19



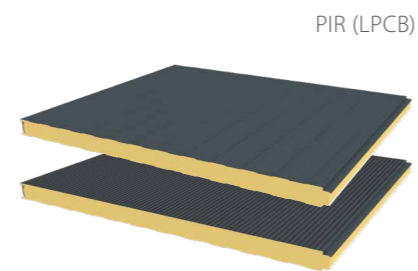
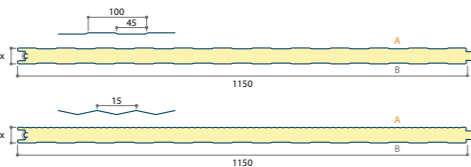
JI Sidings 1000SF PIR Roof

Thickness (mm)	Weight (kg/m ²)	U-Value (W/m ² K)
60	10,44	0,39
120	12,72	0,19



JI Wall PIR (Liner - Microrib profile)

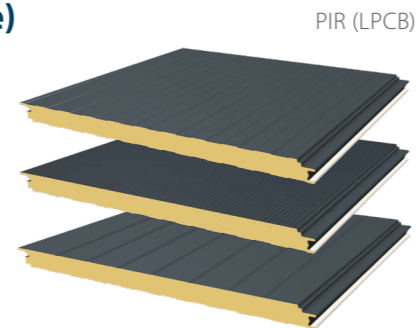
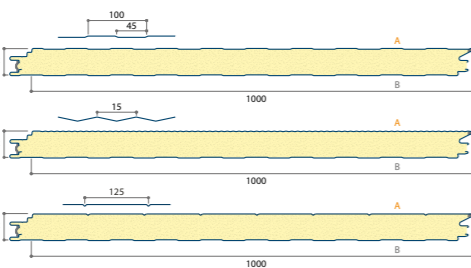
Thickness (mm)	Weight (kg/m ²)	U-Value (W/m ² K)
40	9,79	0,60
60	10,55	0,39
80	11,31	0,27
100	12,07	0,21
120	12,83	0,18
150	13,97	0,14
170	14,73	0,12
200	15,87	0,11
220	16,63	0,10



Remark: 170, 200 and 220 mm are not LPCB-approved

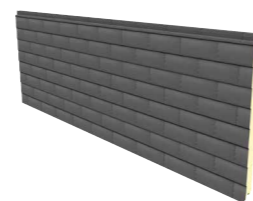
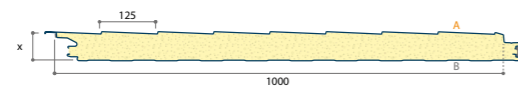
JI Wall 1000SF PIR (Liner - Microrib - Plank profile)

Thickness (mm)	Weight (kg/m ²)	U-Value (W/m ² K)
60	11,03	0,41
80	11,79	0,27
100	12,55	0,21
120	13,31	0,18
150	14,45	0,14



JI Slate 1000SF PIR Wall

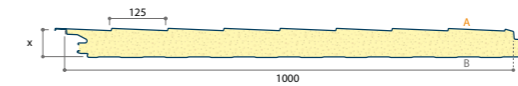
Thickness (mm)	Weight (kg/m ²)	U-Value (W/m ² K)
60	10,44	0,39
120	12,72	0,19



Composite panels

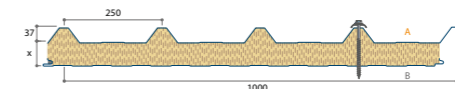
JI Sidings 1000SF PIR Wall

Thickness (mm)	Weight (kg/m ²)	U-Value (W/m ² K)
60	10,44	0,39
120	12,72	0,19



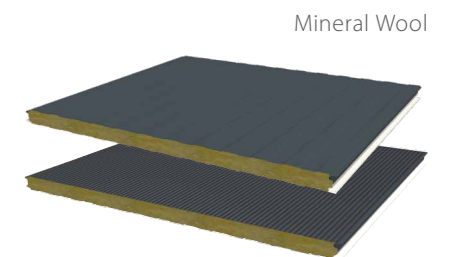
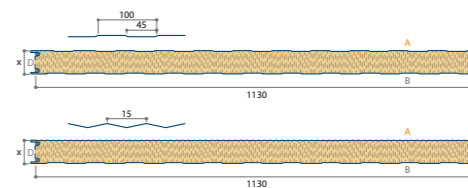
JI Vulcasteel Roof

Thickness (mm)	Weight (kg/m ²)	U-Value (W/m ² K)
50	15,65	0,77
60	16,58	0,66
80	18,64	0,51
100	20,64	0,41
120	22,64	0,35
150	25,57	0,28
175	28,08	0,24
200	30,71	0,21



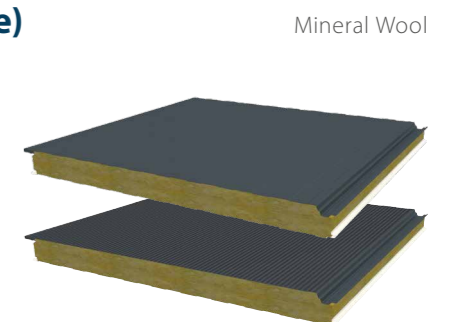
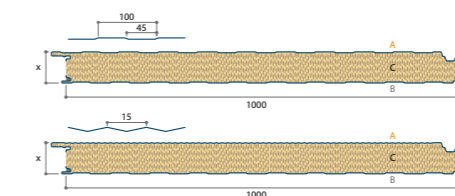
JI Vulcasteel Wall (Liner - Microrib profile)

Thickness (mm)	Weight (kg/m ²)	U-Value (W/m ² K)
50	14,15	0,82
60	15,15	0,71
80	17,14	0,53
100	19,14	0,43
120	21,14	0,36
150	24,13	0,29
175	26,63	0,25
200	29,13	0,21



JI Vulcasteel Wall 1000SF (Liner - Microrib profile)

Thickness (mm)	Weight (kg/m ²)	U-Value (W/m ² K)
50	15,71	0,86
60	16,71	0,71
80	18,71	0,54
100	20,71	0,43
120	22,70	0,36
150	25,70	0,29
175	28,20	0,25
200	30,70	0,21

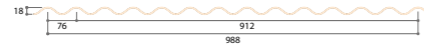


Roof lights

JI Polyester

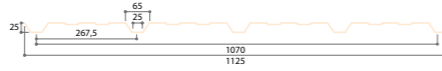
JI Polyester - single skin - 18-076-988

Article	Length(mm)	Thickness (mm)	Weight (kg/m ²)
4000339	2000	0,90	1,40



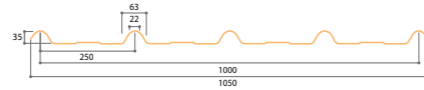
JI Polyester - single skin - 25-267-1070

Article	Length(mm)	Thickness (mm)	Weight (kg/m ²)
4000360	6000	0,90	1,40



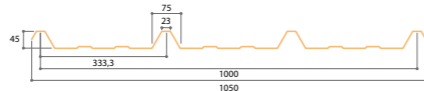
JI Polyester - single skin - 33-250-1000

Article	Length(mm)	Thickness (mm)	Weight (kg/m ²)
4000361	6000	0,90	1,45
4000362	7600	0,90	1,45



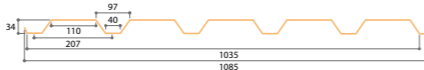
JI Polyester, single skin - 45-333-1000

Article	Length(mm)	Thickness (mm)	Weight (kg/m ²)
4000364	6000	0,90	1,45
4000365	7600	0,90	1,45



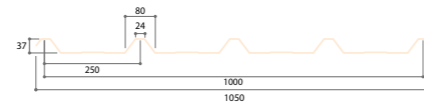
JI Polyester, single skin - 35-207-1035

Article	Length(mm)	Thickness (mm)	Weight (kg/m ²)
4000363	6000	0,90	1,45



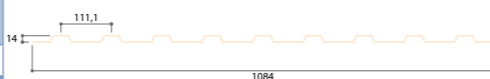
JI Polyester - single skin - 37-250-1000

Article	Length(mm)
custom	



JI Polyester, single skin - GRECA

Article	Length(mm)	Thickness (mm)	Weight (kg/m ²)
4000238	6000	0,90	1,45



Roof lights

JI Polycarbonate

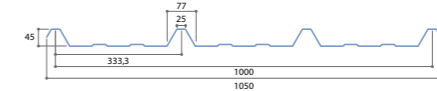
JI Polycarbonate - single skin - 33-250-1000

Article	Thickness (mm)	Weight (kg/m ²)	Tolerated temperatures
3077	1,00	1,37	-40 / +120 °C



JI Polycarbonate - single skin - 45-333-1000

Article	Thickness (mm)	Weight (kg/m ²)	Tolerated temperatures
2519	1,00	1,49	-20 / +100 °C



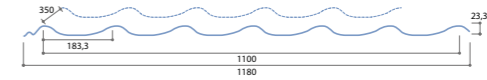
JI Polycarbonate - single skin - 37-250-1000

Article	Thickness (mm)	Weight (kg/m ²)	Tolerated temperatures
1342	1,00	1,38	-40 / +120 °C



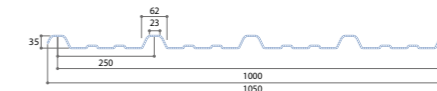
JI Polycarbonate - single skin - 24-183-1100 roof tile profile

Article	Thickness (mm)	Standard length
4000315	1,00	1230 mm



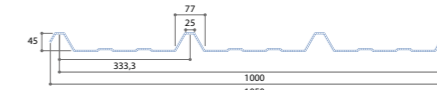
JI Polycarbonate - double skin - 2,5 mm - 33-250-1000

Article	Length (mm)	Thickness (mm)	Weight (kg/m ²)	U (W/m ² .K)
4032853	6000	2,50	1,40	4,50
4033062	7600	2,50	1,40	4,50



JI Polycarbonate - double skin - 2,5 mm - 45-333-1000

Article	Length (mm)	Thickness (mm)	Weight (kg/m ²)	U (W/m ² .K)
4032848	6000	2,50	1,40	4,50
4033061	7600	2,50	1,40	4,50



JI Polycarbonate - double skin - 2,5 mm - 35-207-1035

Article	Length (mm)	Thickness (mm)	Weight (kg/m ²)	U (W/m ² .K)
4033551	6000	2,50	1,45	4,50

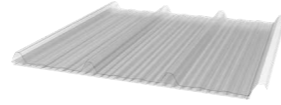
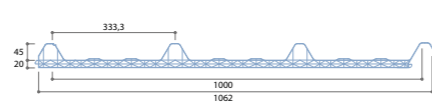


Roof lights

Extruded polycarbonate cover

JI Thermorooft 20 Polycarb 45-333

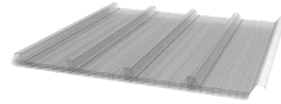
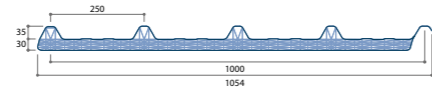
Article	Length (mm)	Thickness (mm)	Weight (kg/m ²)	U (W/m ² .K)
6144	2600 ~ 13600	20	3,30	1,58



Cut back possible 50 ~ 200 mm

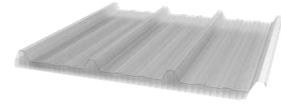
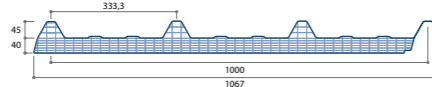
JI Thermorooft 30 Polycarb 33-250

Article	Length (mm)	Thickness (mm)	Weight (kg/m ²)	U (W/m ² .K)
10153	2600 ~ 13600	30	4,50	1,25



JI Thermorooft 40 Polycarb 45-333

Article	Length (mm)	Thickness (mm)	Weight (kg/m ²)	U (W/m ² .K)
9354	2600 ~ 13600	40	4,50	0,95

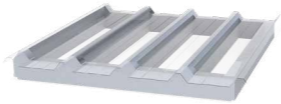
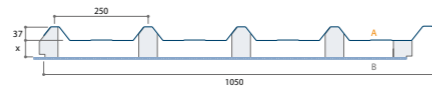


Cut back possible 50 ~ 200 mm

Extruded polycarbonate cover

JI Isotrans Double Polycarb

Art. Prof. 37-250	Art. Prof. 45-333	Art. Prof. 33-250	Thickness (mm)	U (W/m ² .K) Prof. 37-250
-	-	11117	30	-
-	11108	11118	40	-
11095	-	-	50	2,20
11096	11109	11119	60	2,15
11097	11110	-	80	2,09
11098	11111	11120	100	2,03
11099	11112	-	120	1,99
11100	11113	-	150	1,95
11101	-	-	175	1,91
11102	-	-	200	1,88

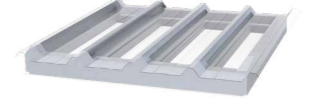
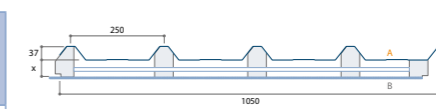


Roof lights

JI Isotrans Triple Polycarb

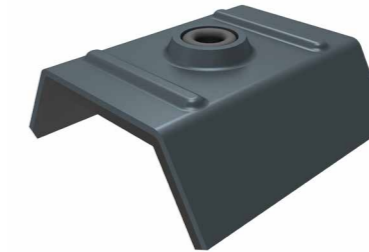
Art. Prof. 37-250	Art. Prof. 45-333	Thickness (mm)	U (W/m ² .K) Prof. 37-250*
11103	11114	100	1,21
11104	11115	120	1,18
11105	11116	150	1,14
11106	-	175	1,12
11107	-	200	1,10

* Additional 10 mm polycarbonate sheet added centrally.

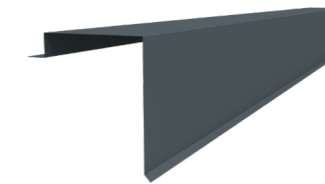
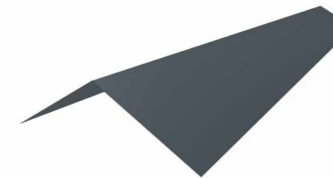


Accessories

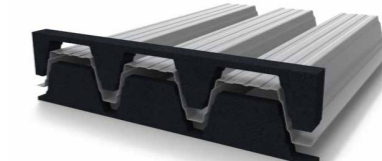
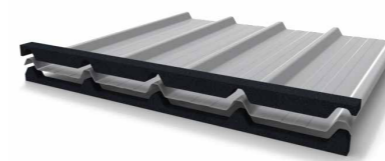
Fixings



Flashings



Foam Fillers, sealants & insulation





JORISIDE

THE STEEL FUTURE

Joris Ide Ltd.

A9, Elmbridge Court,
Gloucester GL3 1JZ, United Kingdom

☎ +44 (0)1452 412 069

☎ +44 (0)1452 358 025

✉ sales@joriside.co.uk

Joris Ide nv/sa

Hille 174,
8750 Zwevezele, Belgium

☎ +32 (0)51 61 07 77

☎ +32 (0)51 61 07 79

✉ info@joriside.be



With more than 30 years of experience, Joris Ide represents a guarantee of quality in the construction market. We bring solutions to all your problems: acoustic, aesthetic, fire, thermal. Joris Ide, the essential partner for all your projects.



JORIS IDE IS
PLANET
PASSIONATE

