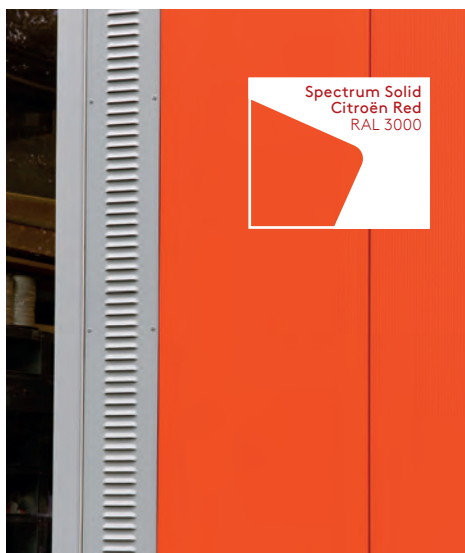
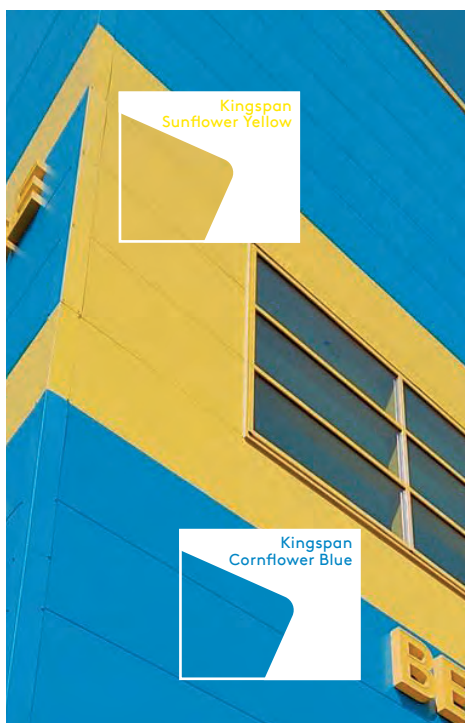


Insulated Panels

UK & Ireland

Colours & Coatings

External Colour & Coating Ranges

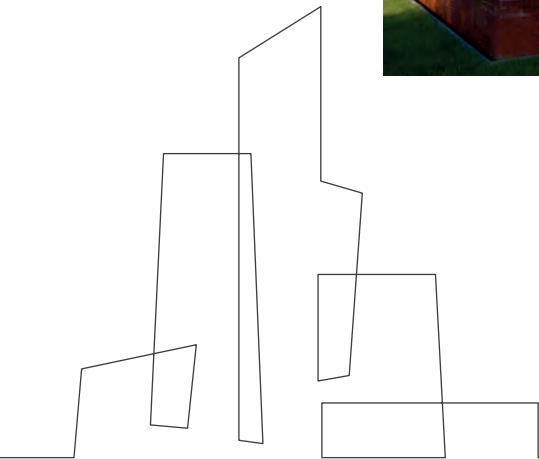


Kingspan Colour & Coatings

Kingspan provides a large selection of external finishes and colours for its Insulated Roof & Wall Panels, Fabrications and Lighting Solutions, allowing building owners’ and architects the ultimate flexibility in designing their building.

With a wide variety of finishes including metallic, matt and solid, Kingspan’s offer is suitable for the following building types:

- Community & Amenity
- Education
- Health
- Hotels & Leisure
- Industrial
- Infrastructure
- Offices
- Private Housing
- Retail
- Social Housing
- Utilities



Kingspan Guarantees



In recognition of the many different demands that are placed on construction professionals today, Kingspan Insulated Panels offers comprehensive warranties on not just one aspect of its products, but all of the key performance areas.

Kingspan Warranties provide market-leading protection that covers the coating, durability, structural, fire and thermal performance of a product in a single, unique package.

Kingspan Insulated Panels sources its colour coated metal from several world class coatings suppliers and the Warranty includes a coatings protection against corrosion, chemical attack, ultra-violet radiation, humidity and abrasion for up to 40 years (in nominated geographic zones), so the building owner can be sure that the building will continue to look good year on year. The thermal efficiency and structural performance of the panels are warranted for periods of up to 25 years.

The below table refers to warranty periods for the United Kingdom and Ireland:

	Inland Roof	Inland Wall	Coastal Roof**	Coastal Wall**
Kingspan XL Forté	Up to 40 years	Up to 40 years	Up to 30 years	Up to 30 years
Kingspan XL Forté*	Up to 30 years	Up to 40 years	Up to 25 years	Up to 30 years
Kingspan Spectrum Solid / Metallic	Up to 30 years	Up to 30 years	Up to 25 years	Up to 25 years
Kingspan Spectrum 70 Solid / Metallic***	Up to 40 years	Up to 40 years	Up to 30 years	Up to 30 years
Kingspan Altaris (ALL) 2L	N/A	Up to 30 years	N/A	N/A
Kingspan Altaris (ALL) 3L	N/A	Up to 40 years	N/A	Up to 20 years
Kingspan Altaris (ALL) 4L	N/A	Up to 40 years	N/A	Up to 20 years
Membranes	A 15 year warranty is available as standard. Up to 25 years on application. For warranties in excess of 15 years, please contact Kingspan Tech-eXchange.			

* Please note the reduction in the roof warranty that is applicable to specific colours within this range.

** Coastal refers to buildings within 1 km of the coast.

*** Spectrum 70 has an additional protective layer over the standard Spectrum coating and is suitable for both Roof and Wall applications.

Extra reassurance where you need it

Corrosion



Chemical



UV



Condensation



Kingspan offers the following range of coating systems suitable for external applications:

- Kingspan XL Forté;
- Kingspan Spectrum;
- Kingspan Spectrum Metallic;
- Kingspan Altaris

Kingspan coating systems offer many important advantages over those provided by any other coatings on the market:

Excellent corrosion resistance

Kingspan coatings are best in class for corrosion resistance. They use innovative metal alloy substrates, which provide maximum resistance to corrosion on scratches and on cut edges.

Advanced colour stability and UV resistance

Kingspan coloured coatings use state-of-the-art technology with improved UV resistance that provides better gloss retention and weather resistance.

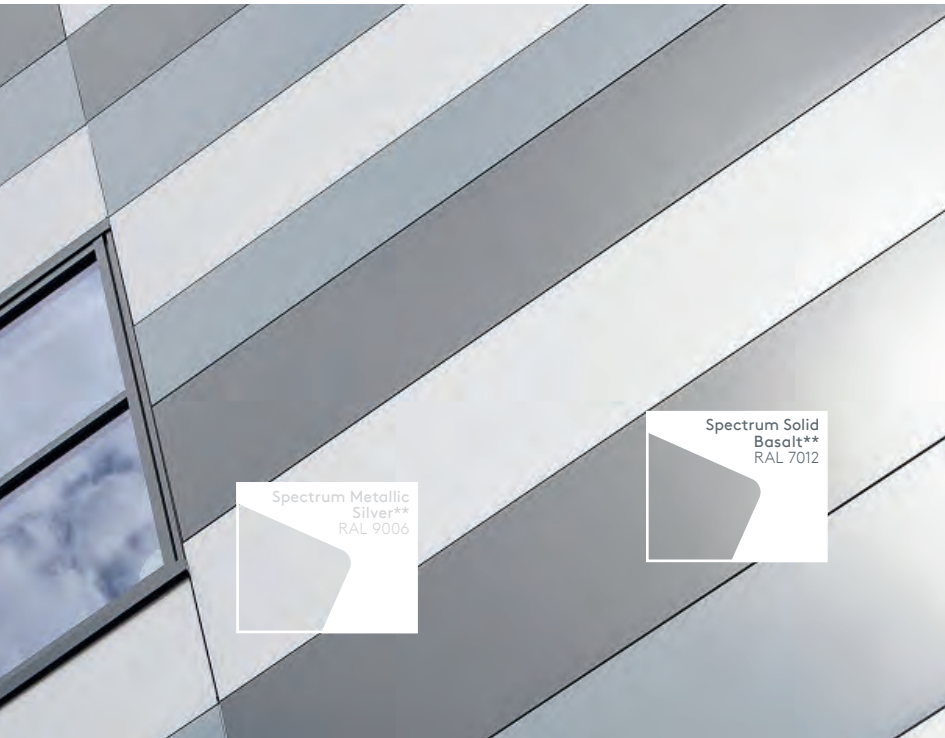
Low Maintenance, saving time, trouble and cost

Kingspan coatings require a minimal maintenance regime and their performance will not deteriorate during their lifetime. Please refer to the C.O.S.H.H. & Maintenance data sheet for more details.

LEED Points:

Up to two LEED points are available where building design works towards Heat Island Reduction. The colour range includes colours with high SRI value, creating a high reflective roof, helping to reduce the heat island effect and the associated negative impacts.

Kingspan Colours



Kingspan XL Forté

A range of world class protective PVC coatings with a leathergrain effect that is available in inspiring colours and provides a barrier against the elements.

 <p>White RAL 9003 BS 00E55</p>	 <p>Grey White RAL 9002</p>	 <p>Sunflower Yellow* BS 10E55</p>	 <p>Saffron Yellow* BS 08E53</p>
 <p>Cream RAL 1015 BS 10C31</p>	 <p>Mushroom RAL 080 70 10 BS 10B19</p>	 <p>Camouflage RAL 110 50 10</p>	 <p>Willow Green RAL 100 80 20 BS 12B17</p>
 <p>Khaki Green RAL 100 60 20 BS 12B21</p>	 <p>Leaf Green* RAL 6002</p>	 <p>Bottle Green RAL 6007</p>	 <p>Olive Green RAL 100 30 20 BS 12B27</p>
 <p>Holly Bush BS 14C39</p>	 <p>Juniper Green* RAL 160 20 10 BS 12B29</p>	 <p>Gull Grey RAL 240 80 05 BS 18B17</p>	 <p>Goosewing Grey RAL 080 70 05 BS 10A05</p>
 <p>Merlin Grey RAL 180 40 05 BS 18B25</p>	 <p>Pure Grey RAL 000 55 00</p>	 <p>Anthracite RAL 7016</p>	 <p>Umber Grey RAL 7022</p>
 <p>Powder Blue RAL 210 80 10</p>	 <p>Denim RAL 5014</p>	 <p>Wedgewood Blue RAL 220 50 15 BS 18C37</p>	 <p>Cornflower Blue* BS 18E53</p>
 <p>Azure Blue* RAL 220 30 25 BS 18C39</p>	 <p>Sapphire Blue* RAL 5003</p>	 <p>Midnight RAL 5008</p>	 <p>Slate Blue* BS 18B29</p>
 <p>Flame Red* BS 04E53</p>	 <p>Russet Red* RAL 3013 BS 04D44</p>	 <p>Copper Beech* RAL 040 40 40 BS 04C39</p>	 <p>Red Brown* RAL 8012</p>
 <p>Van Dyke Brown* RAL 8014 BS 08B29</p>	 <p>Black RAL 9005 BS 00E53</p>		

For stock levels, minimum order quantities and/or lead times, contact the Kingspan Quotations Department. The printed colours are as accurate as possible but are for guidance purposes only. British Standard (BS) or RAL reference numbers represent the nearest colours and are not exact matches to our Kingspan coatings. Please ensure that you request a swatch sample from the Kingspan Marketing Department to view accurate colour and texture prior to specification.

* Please note the guarantee periods for these colours are as for XL Forté* – see table under ‘Kingspan Guarantees’.

Kingspan Spectrum

A range of proven smooth polyurethane coatings that delivers aesthetic brilliance and guaranteed performance in a variety of applications.

Kingspan Spectrum Solid



QuadCore[™]LEC
LOWER EMBODIED CARBON SOLUTIONS

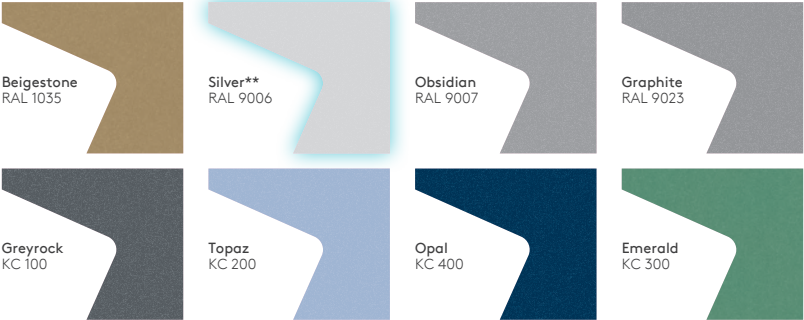
** Also available for our Lower Embodied Carbon products. Other colour options are available depending on order size and availability. Please contact us for more information.

For stock levels, minimum order quantities and/or lead times, contact the Kingspan Quotations Department. The printed colours are as accurate as possible but are for guidance purposes only. British Standard (BS) or RAL reference numbers represent the nearest colours and are not exact matches to our Kingspan coatings. Please ensure that you request a swatch sample from the Kingspan Marketing Department to view accurate colour and texture prior to specification.

Kingspan Spectrum

A range of proven smooth polyurethane coatings that delivers aesthetic brilliance and guaranteed performance in a variety of applications.

Kingspan Spectrum Metallic



** Also available for our Lower Embodied Carbon products. Other colour options are available depending on order size and availability. Please contact us for more information.

For stock levels, minimum order quantities and/or lead times, contact the Kingspan Quotations Department. The printed colours are as accurate as possible but are for guidance purposes only. British Standard (BS) or RAL reference numbers represent the nearest colours and are not exact matches to our Kingspan coatings. Please ensure that you request a swatch sample from the Kingspan Marketing Department to view accurate colour and texture prior to specification.

Kingspan Altaris

Technically advanced PVDF multi-layer (up to 4 layers of paint) coatings featuring colour purity, strength, resistance and stability. This range provides unparalleled protection against environmental weathering and is available with a high gloss finish.

Kingspan Altaris Solid



For stock levels, minimum order quantities and/or lead times, contact the Kingspan Quotations Department. The printed colours are as accurate as possible but are for guidance purposes only. British Standard (BS) or RAL reference numbers represent the nearest colours and are not exact matches to our Kingspan coatings. Please ensure that you request a swatch sample from the Kingspan Marketing Department to view accurate colour and texture prior to specification.

Kingspan Altaris

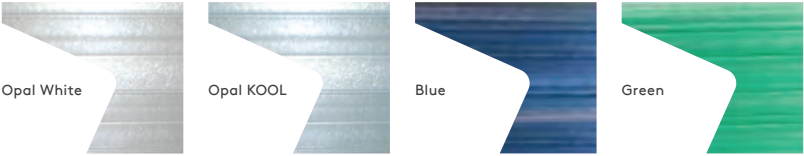
Kingspan Altaris Metallic



For stock levels, minimum order quantities and/or lead times, contact the Kingspan Quotations Department. The printed colours are as accurate as possible but are for guidance purposes only. British Standard (BS) or RAL reference numbers represent the nearest colours and are not exact matches to our Kingspan coatings. Please ensure that you request a swatch sample from the Kingspan Marketing Department to view accurate colour and texture prior to specification.

Kingspan Day-Lite

A range of colourful translucent multi-wall polycarbonate for roof and wall applications, with UV protected layers that allow high levels of natural light to pass through.



Anti-glare

Anti-glare is a treatment which is part of the extrusion process of the polycarbonate sheet – this option is available on clear and opal white.

Roof options : Opal White and Opal KOOL
Wall options : Opal White, Opal KOOL, Blue and Green

Membranes

High performance polyvinyl chloride (PVC) single-ply membrane specifically designed for roof applications and fabrications.



UK

Kingspan Limited

Greenfield Business Park No.2

Greenfield | Holywell

Flintshire | North Wales

CH8 7GJ

T: +44 (0) 1352 716100

info@kingspanpanels.com

www.kingspanpanels.co.uk

Ireland

Kingspan Limited

Carrickmacross Road

Kingscourt | Co. Cavan

A82 E897

Tel: +353 (0) 42 96 98500

info.ire@kingspanpanels.com

www.kingspanpanels.ie

Please scan the QR code below for the most up to date version of this document.



For the product offering in other markets please contact your local sales representative or visit www.kingspanpanels.com

Care has been taken to ensure that the contents of this publication are accurate, but Kingspan Limited and its subsidiary companies do not accept responsibility for errors or for information that is found to be misleading. Suggestions for, or description of, the end use or application of products or methods of working are for information only and Kingspan Limited and its subsidiaries accept no liability in respect thereof.

12/2024

